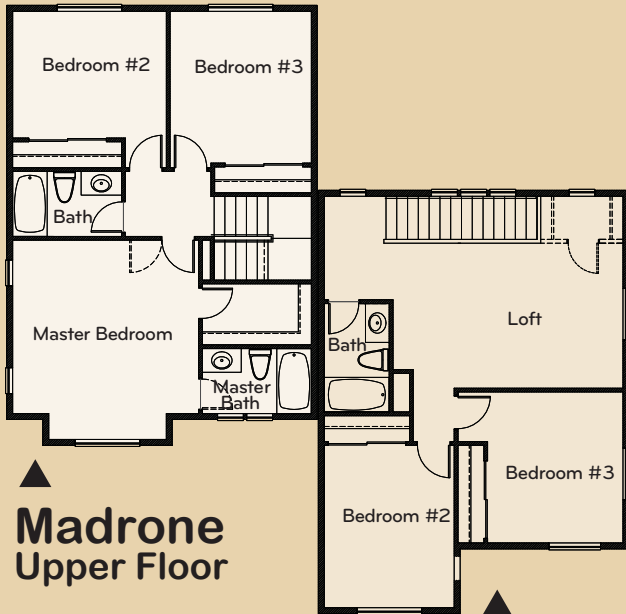


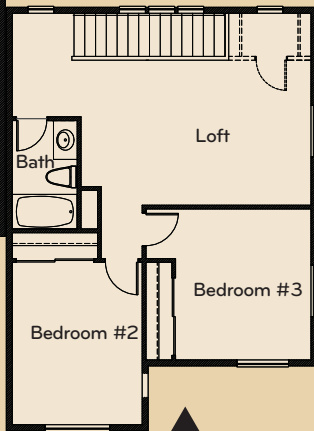
# Madrone / Magnolia

# CASCARA

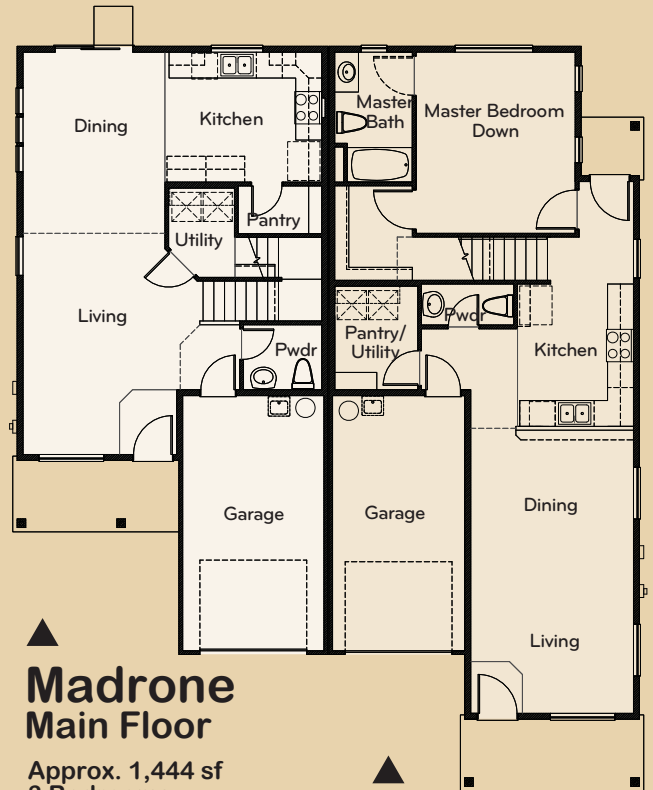
AT THE VILLAGES



**Madrone  
Upper Floor**



**Magnolia  
Upper Floor**



**Madrone  
Main Floor**

Approx. 1,444 sf  
3 Bedrooms  
2.5 Baths  
One-car Garage

**Magnolia  
Main Floor**

Approx. 1,610 sf  
3 Bedrooms  
2.5 Baths  
One-car Garage



Artist's rendering does not reflect color or exterior choices and is used for demonstration only.

For More Information, Contact:  
Karen Hutchens or Sunny Villars  
425-367-4763

  
Windermere  
SOLUTION PARTNERS NW

**QUADRANT HOMES**

